

ANGLETON/LAKE JACKSON, TEXAS

AL-6453 (FAA)

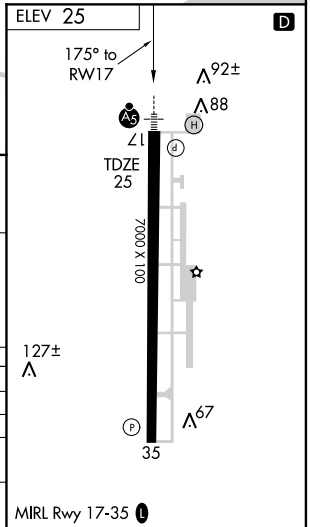
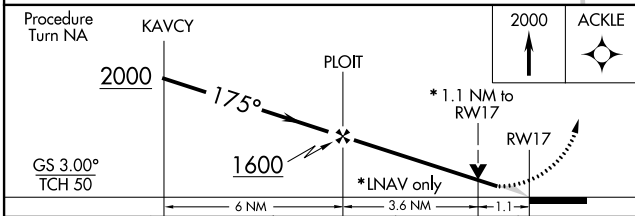
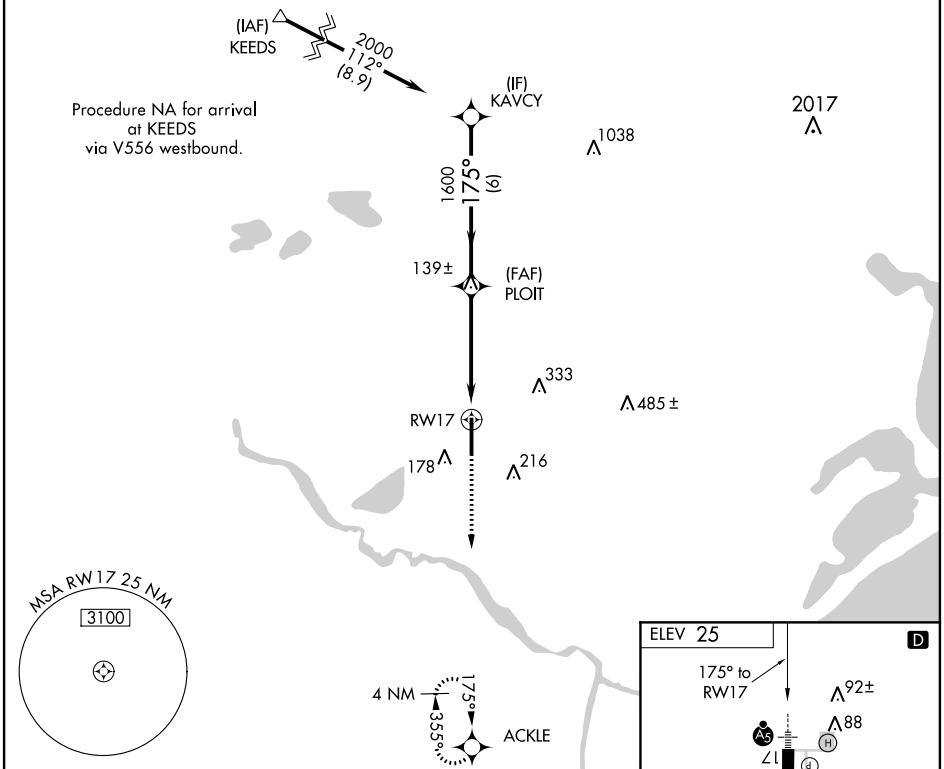
WAAS CH <b>70316</b> <b>W17A</b>	APP CRS <b>175°</b>	Rwy Idg TDZE Apt Elev	<b>7000</b> <b>25</b> <b>25</b>
--	------------------------	-----------------------------	---------------------------------------

# RNAV (GPS) RWY 17

ANGLETON/ TEXAS GULF COAST RGNL (L.B.X)

<p><b>▼</b> DME/DME RNP-0.3 NA. Baro-VNAV NA below -16°C (4°F). If local altimeter setting not received, use William P. Hobby altimeter setting and increase all DAs/MDAs 100 feet. Baro-VNAV and VDP NA when using William P. Hobby altimeter setting. Circling NA east of Rwy 17-35. For inoperative MALSR, increase LPV visibility to 1 mile all Cats, LNAV Cat D visibility to 1/4 mile.</p>	<p>MALSR</p>	<p>MISSED APPROACH: Climb to 2000 direct ACKLE and hold.</p>
--	--------------	--

ASOS <b>119.925</b>	HOUSTON APP CON <b>134.45 284.0</b>	CLNC DEL <b>125.2</b>	UNICOM <b>123.0 (CTAF) 0</b>
------------------------	--	--------------------------	---------------------------------



CATEGORY	A	B	C	D
LPV DA	282-1/2 257 (300-1/2)			
LNAV/VNAV DA	360-3/4 335 (400-3/4)			
LNAV MDA	420-1/2 395 (400-1/2)		420-1 395 (400-1)	
CIRCLING	480-1 1/4 455 (500-1 1/4)		480-1 1/2 580-2 555 (600-2)	

ANGLETON/LAKE JACKSON, TEXAS  
Amdt 2 10322

ANGLETON/ TEXAS GULF COAST RGNL (L.B.X)  
29°07'N - 95°28'W  
**RNAV (GPS) RWY 17**

SC-5, 30 MAY 2013 to 27 JUN 2013

SC-5, 30 MAY 2013 to 27 JUN 2013